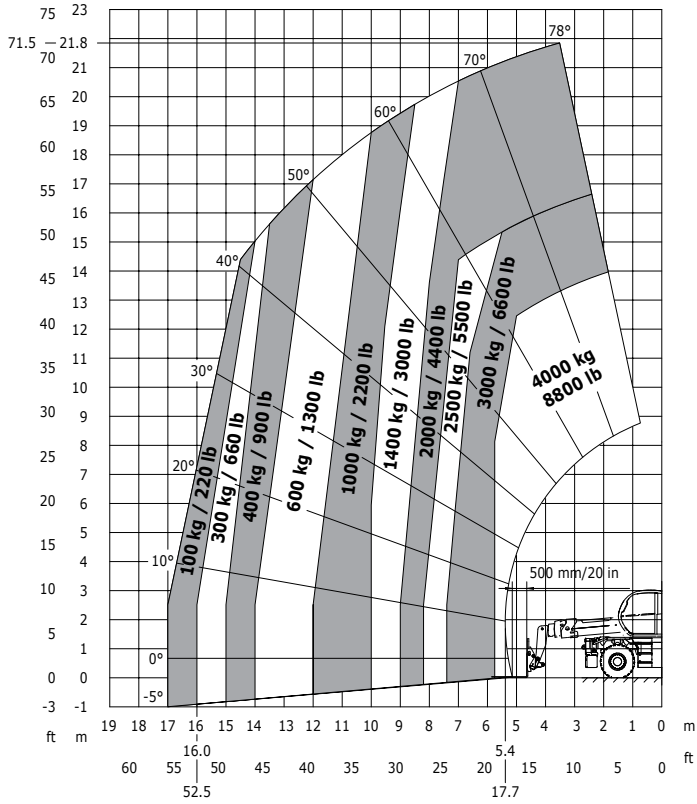
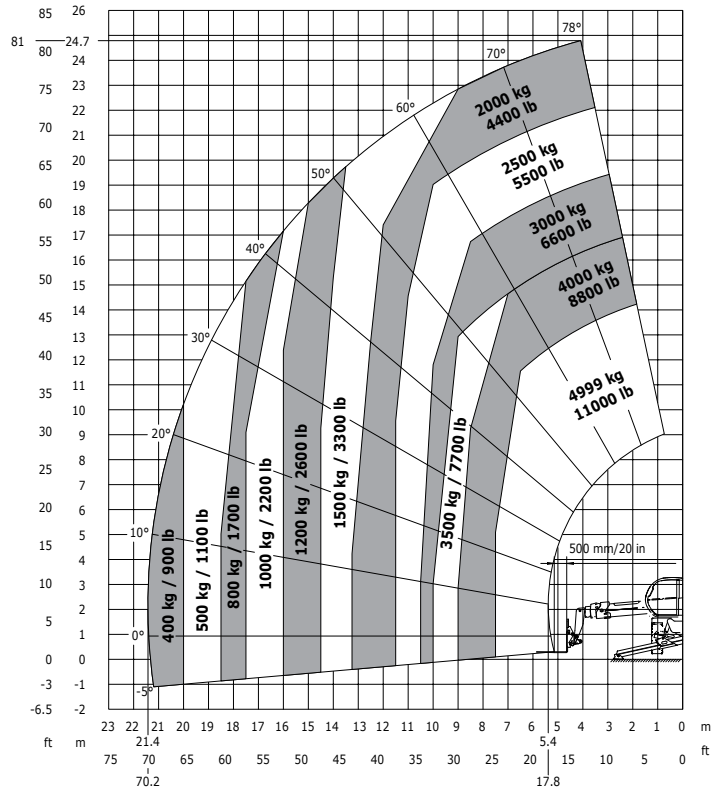


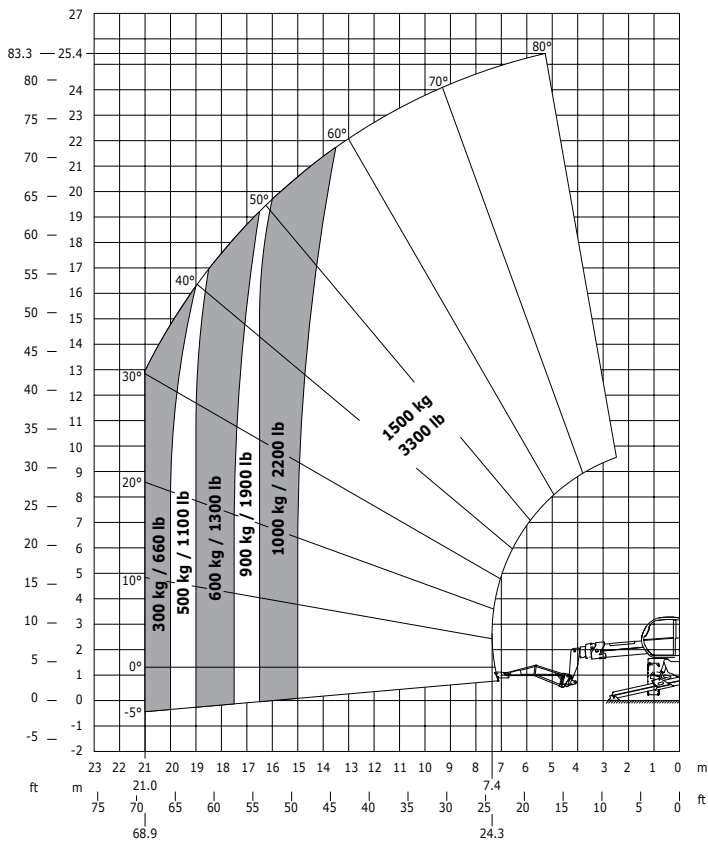
**Frontal auf Rädern
mit Gabelzinken**



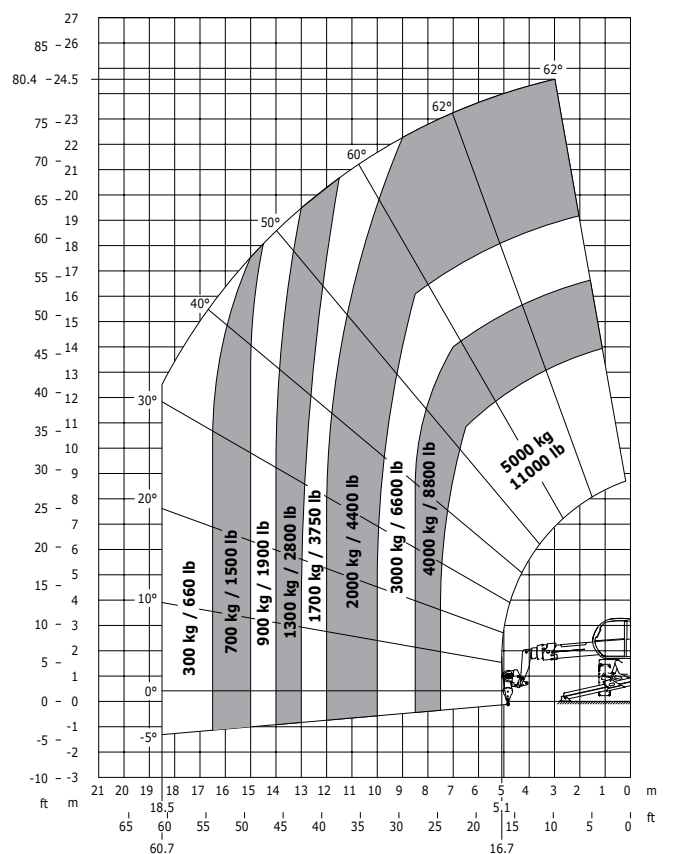
**Drehung auf ausgefahrenen Stützen
mit Gabelzinken**



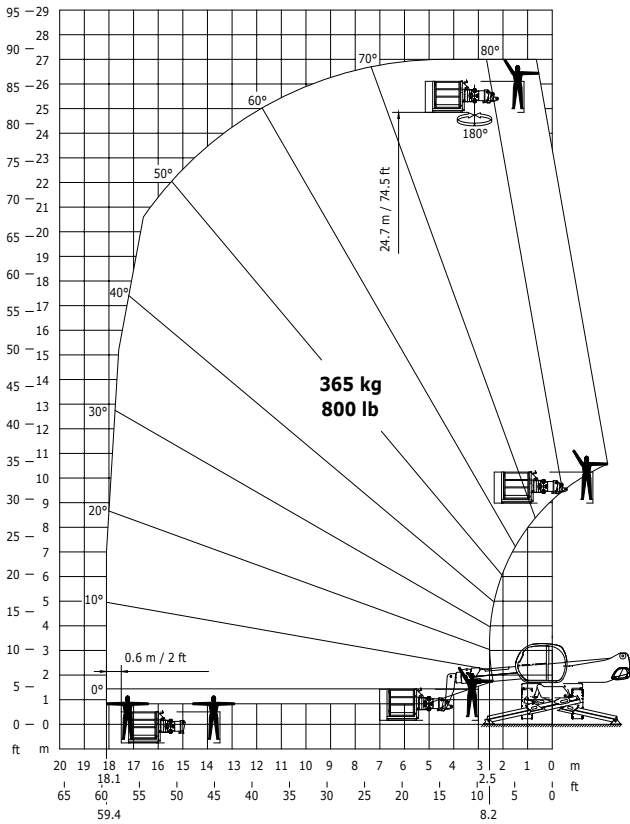
**Drehung auf ausgefahrenen Stützen
mit Kranausleger 1500 kg**



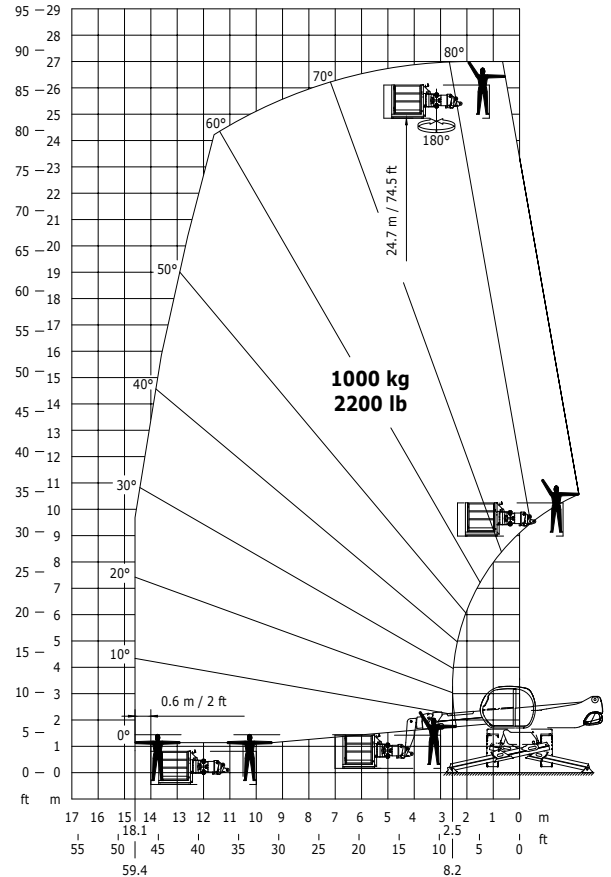
**Drehung auf ausgefahrenen Stützen
mit Seilwinde 5000 kg**



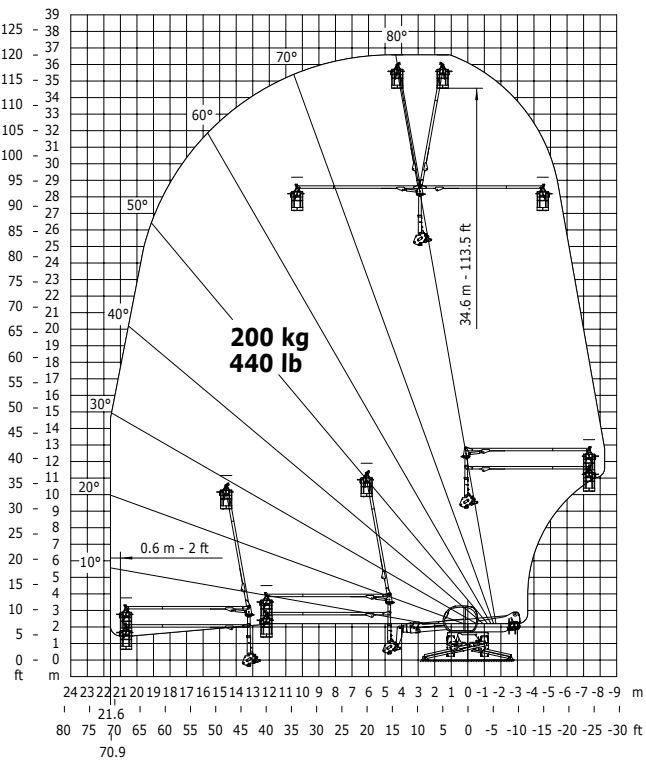
**Drehung auf ausgefahrenen Stützen
mit Arbeitsbühne 365**



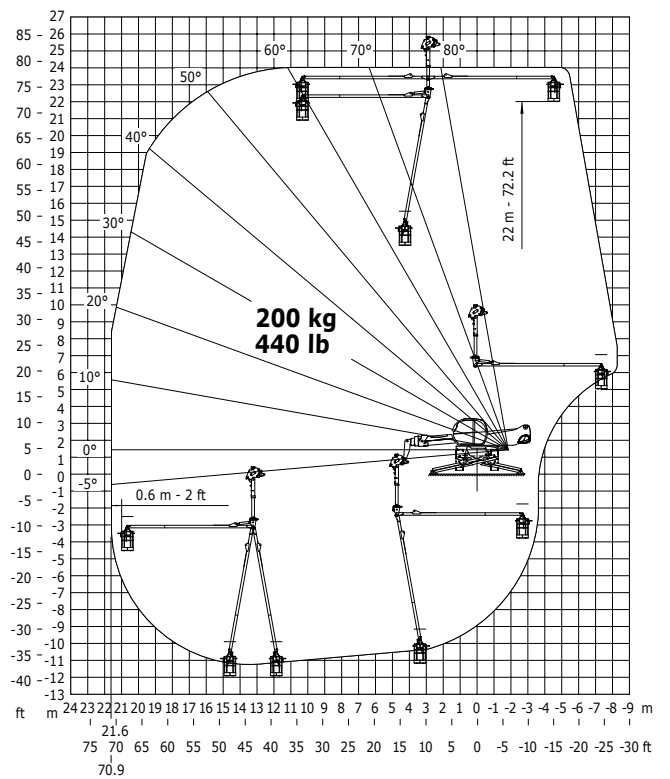
**Drehung auf ausgefahrenen Stützen
mit Arbeitsbühne 1000**



**Drehung auf ausgefahrenen Stützen
3D positiv**



**Drehung auf ausgefahrenen Stützen
3D negativ**

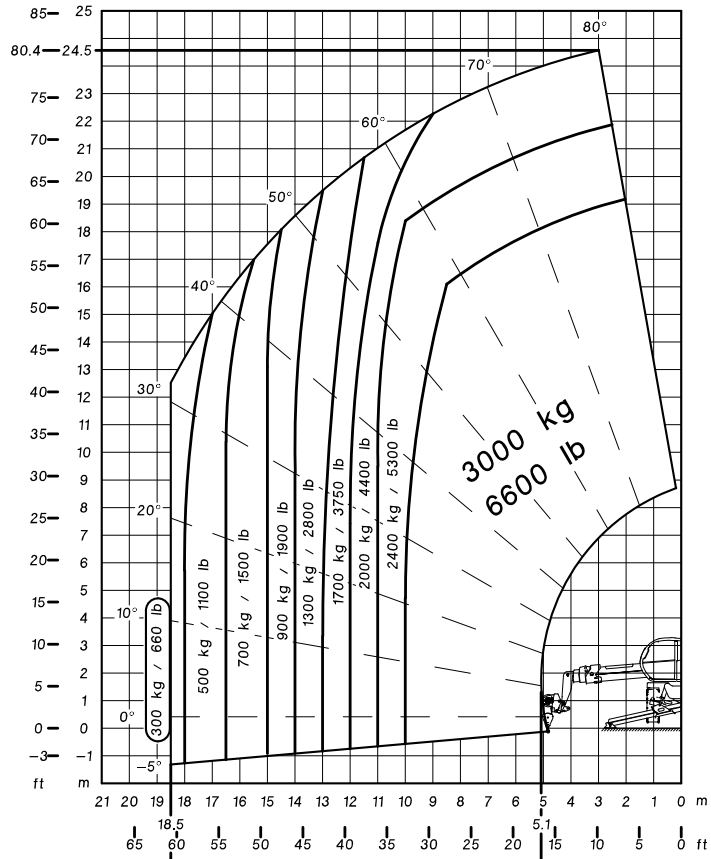




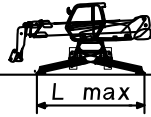
MRT 2550+

Winch 3T

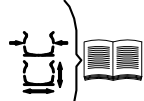
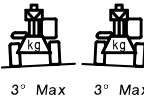
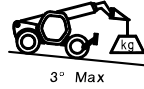
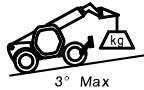
Pos. C



Standard used EN1459 - AS1418.19 - ASME B56.6



36 Km/h Max (10 m/s)



Ground conditions: solid surface



0km/h

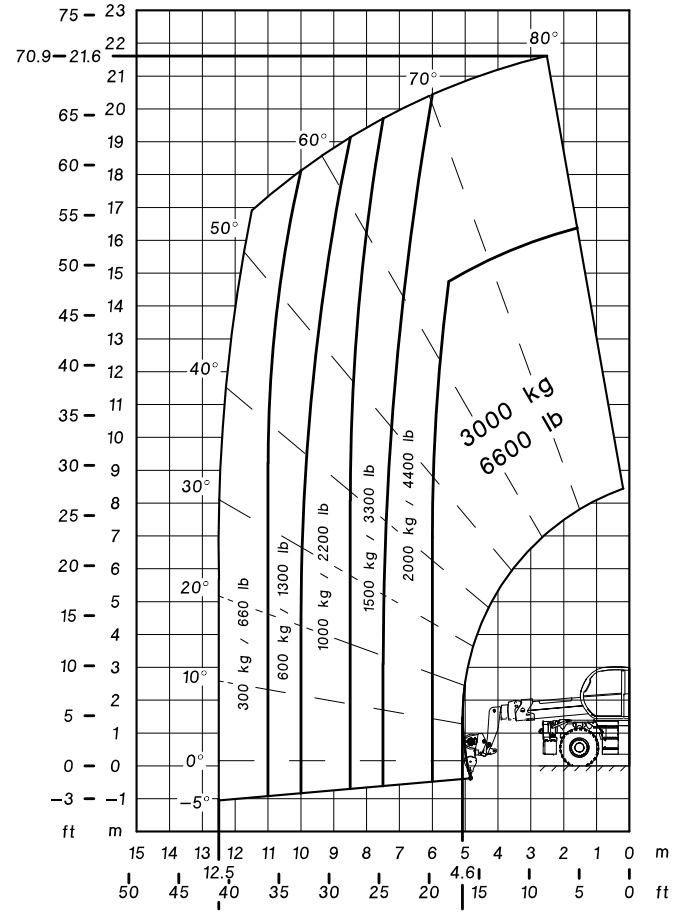
53019835



MRT 2550+

Winch 3T

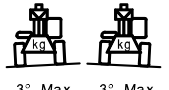
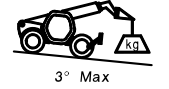
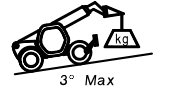
Pos. C



Standard used EN1459 - AS1418.19 - ASME B56.6



36 Km/h Max (10 m/s)



Ground conditions: solid surface



0km/h

53019836

MANITOU		MRT 2550+	
Winch 3T		Pos. C	

Capacity chart showing load capacity (kg and lb) versus height (m and ft) for various boom angles (0° to 55°). A callout box indicates a 3000 kg (6600 lb) capacity.

36 Km/h Max (10 m/s)
3° Max
3° Max
3° Max
3° Max
3° Max
0km/h

Ground conditions: solid surface

53019837

Standard used EN1459 - AS1418.19 - ASME B56.6

MANITOU		MRT 2550+	
Winch 3T		Pos. C	

45° Max
2600 kg MAX
3m Min
0.3m Max
1.5 Km/h Max (0.4 m/s)

36 km/h Max (10 m/s)
8.75% Max
8.75% Max
8.75% Max
8.75% Max
8.75% Max
Ground conditions: solid surface

53019838

Standard used EN1459 - AS1418.19 - ASME B56.6